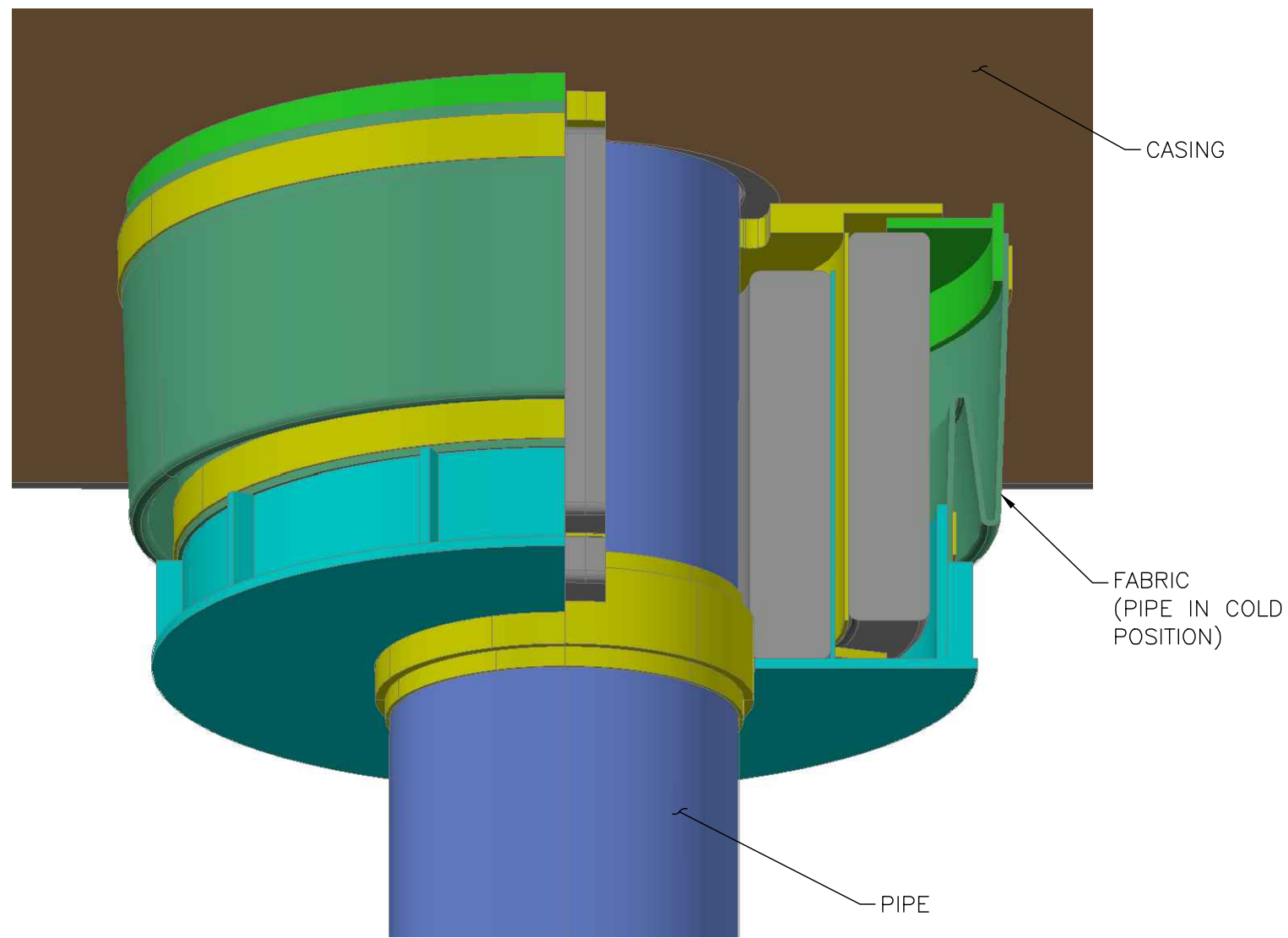
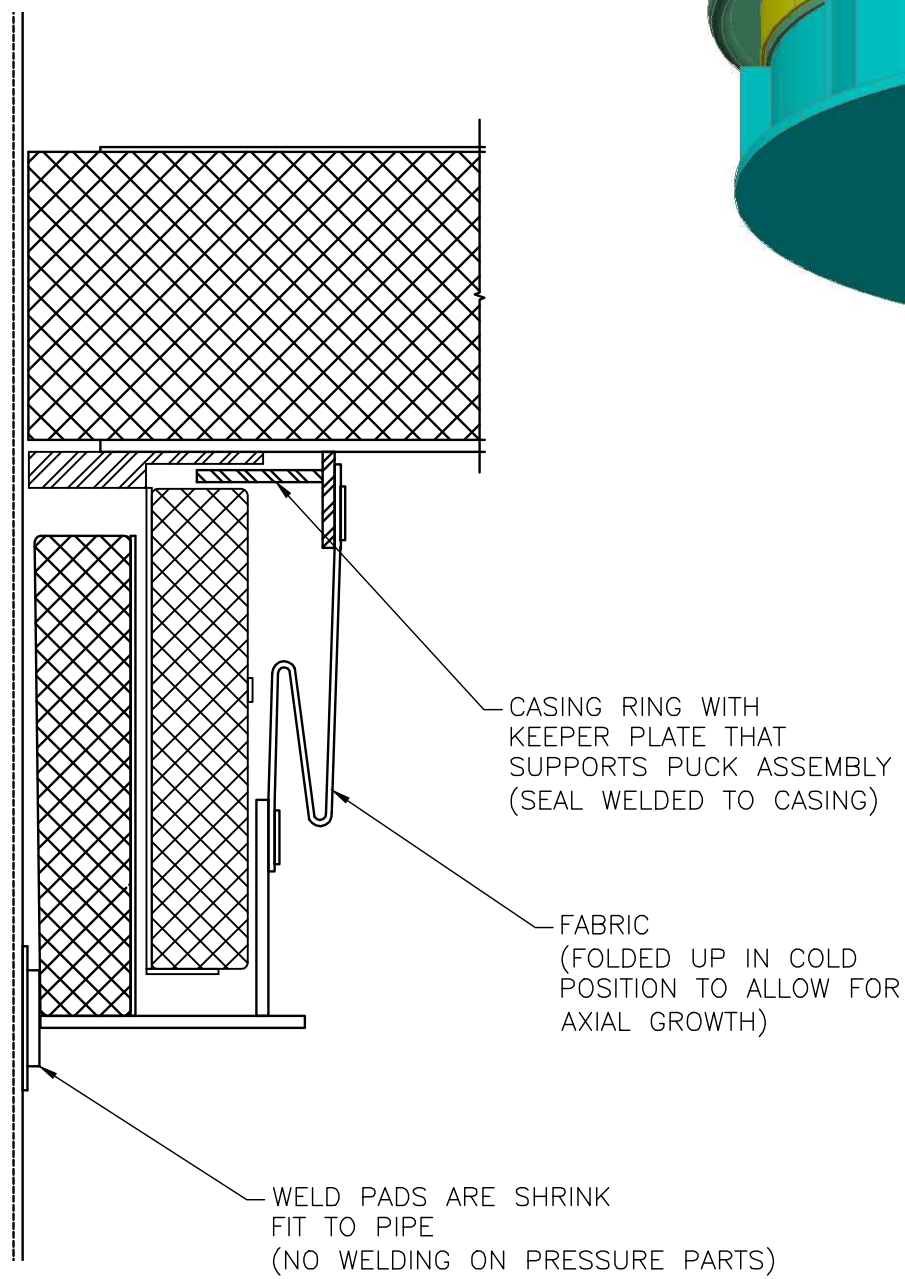
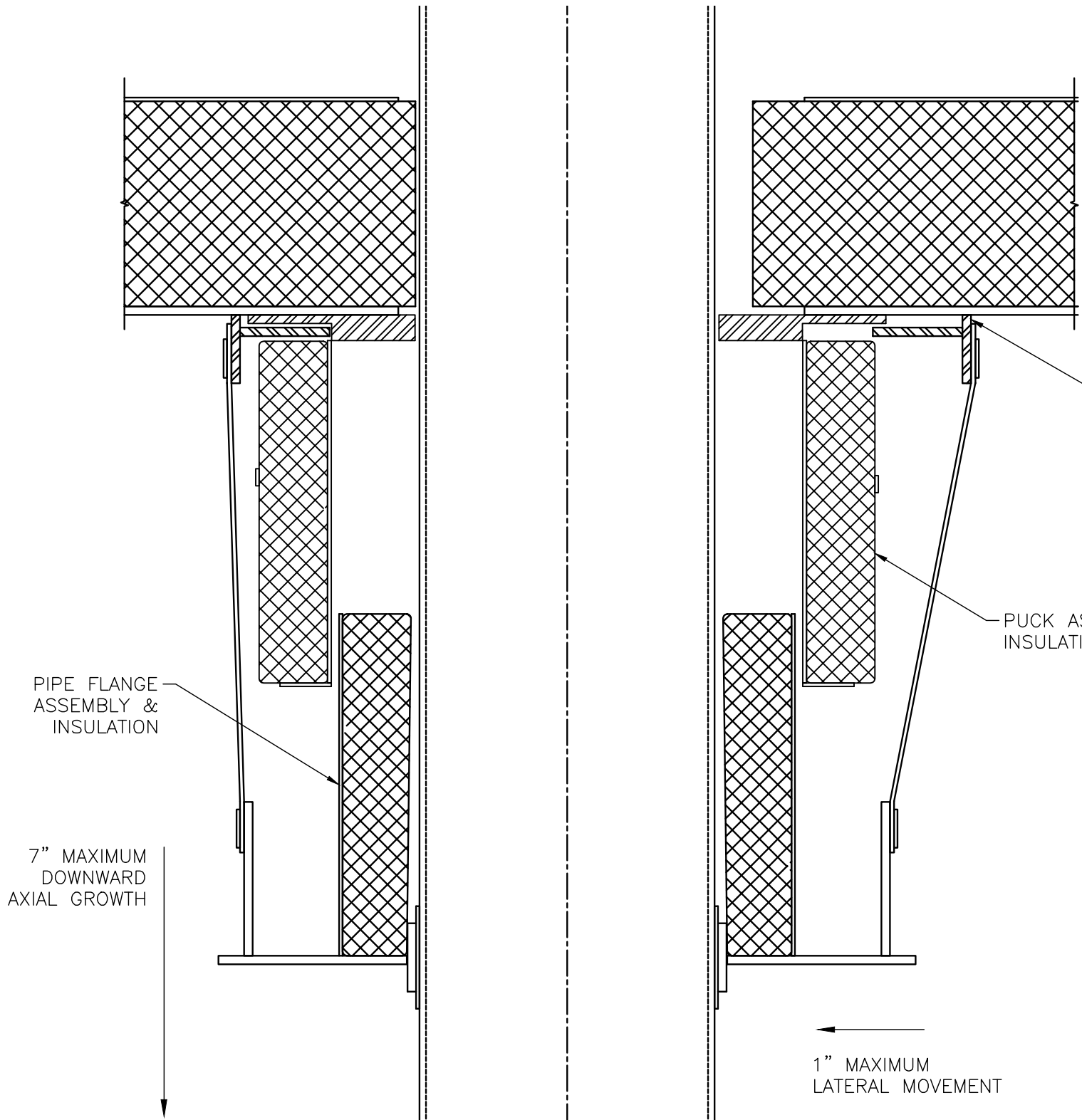


SECTIONAL SIDE VIEW  
COLD POSITION



THIS DRAWING IS ISSUED IN CONFIDENCE FOR ENGINEERING INFORMATION ONLY AND MAY NOT BE REPRODUCED, DISCLOSED TO THIRD PARTIES OR USED TO MANUFACTURE ANYTHING SHOWN HEREON WITHOUT DIRECT WRITTEN PERMISSION FROM HRST INC.				<b>TOLERANCE</b> FRACTIONS: $\pm 1/16"$ [1.6mm] DECIMALS: $\pm .010"$ [.25mm] ANGLES: $\pm 1^\circ$ OR AS STATED OTHERWISE		<b>HRST</b> HRST INC. MINNEAPOLIS, MN	
<h2 style="text-align: center;">HTF BOTTOM SEAL CONCEPT SKETCH</h2>							
DRAWN BY KJL		DATE 03/24/21		CHECKED BY		DATE	
PROJ. ENG.		DATE		PROJ. MGR.		DATE	
PROJ. NO. STANDARD				DWG. NO. SK200039			
						SHT 1 OF 2	
						REV <u>  </u>	



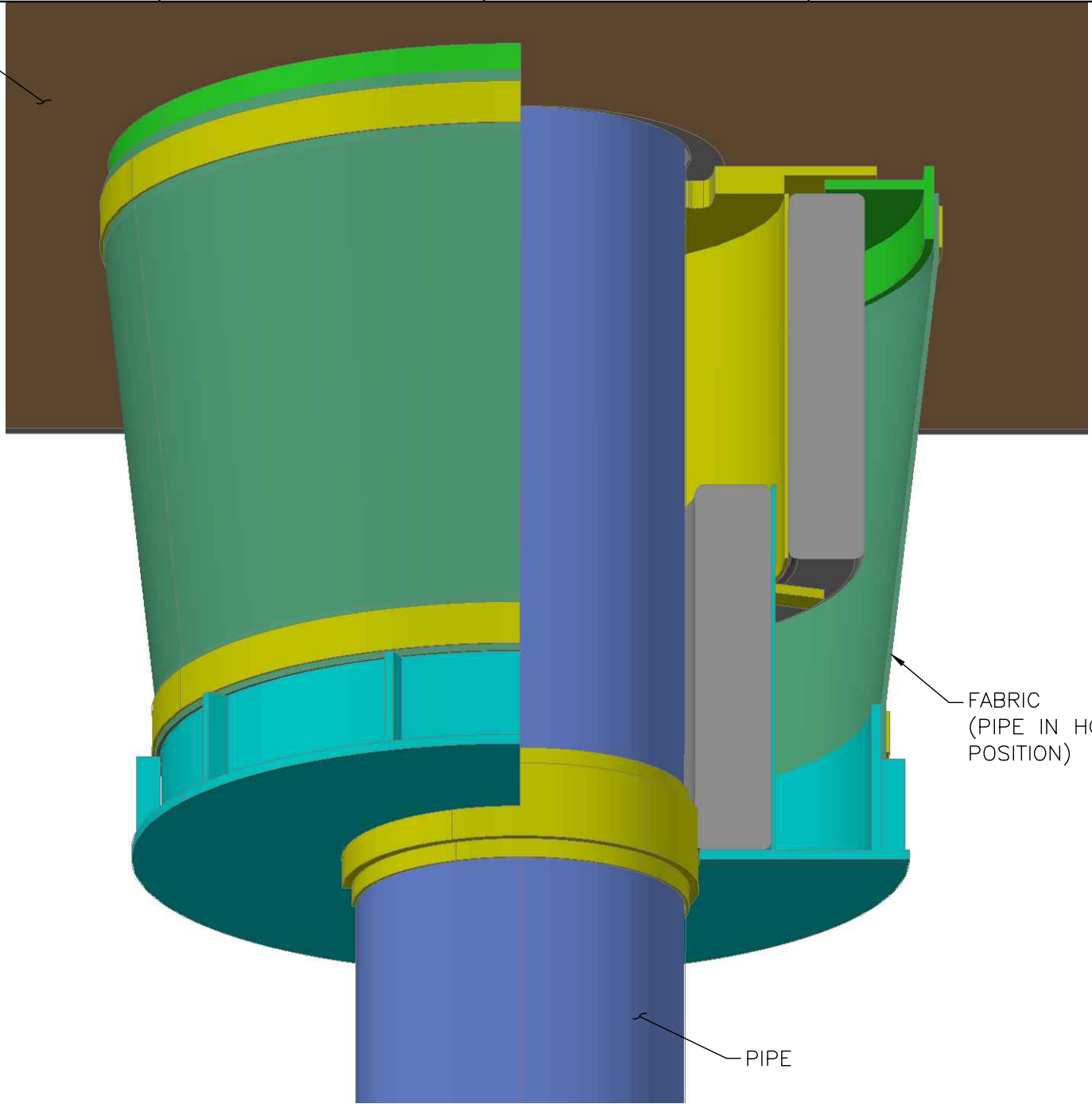
SECTIONAL SIDE VIEW  
HOT POSITION WITH LATERAL MOVEMENT

CASING

CASING RING  
ASSEMBLY

PUCK ASSEMBLY &  
INSULATION

1" MAXIMUM  
LATERAL MOVEMENT



FABRIC  
(PIPE IN HOT  
POSITION)

PIPE

THIS DRAWING IS ISSUED IN  
CONFIDENCE FOR ENGINEERING  
INFORMATION ONLY AND MAY NOT  
BE REPRODUCED, DISCLOSED TO  
THIRD PARTIES OR USED TO  
MANUFACTURE ANYTHING SHOWN  
HEREON WITHOUT DIRECT WRITTEN  
PERMISSION FROM HRST INC.

TOLERANCE  
FRACTIONS:  $\pm 1/16"$  [1.6mm]  
DECIMALS:  $\pm .010"$  [.25mm]  
ANGLES:  $\pm 1^\circ$   
OR AS STATED  
OTHERWISE

HRST INC.  
MINNEAPOLIS, MN



## HTF BOTTOM SEAL CONCEPT SKETCH

DRAWN BY  
KJL

DATE  
03/24/21

CHECKED BY

DATE

PROJ. NO. STANDARD

PROJ. ENG.

DATE

PROJ. MGR.

DATE

DWG. NO. SK200039

SHT 2 OF 2

REV